

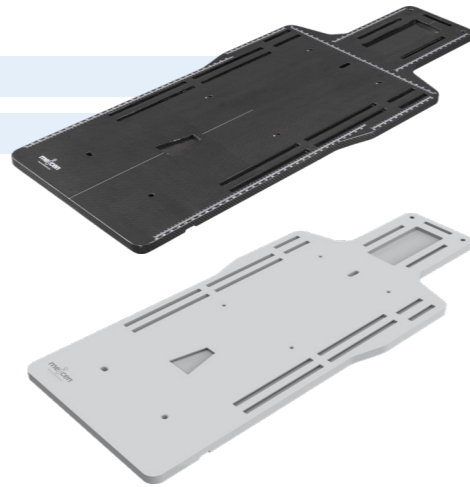
Meicen A-Series Baseplates

Meicen A-Series AIO Baseplate

MC-AF001 Carbon Fiber

MC-AG001 Glass Fiber MR

- Provides multiple treatment options for head, neck, shoulders, thorax, pelvic and full-body support.
- Different location choices to provide better immobilization for each patient.
- Shoulder Retractor can be used to improve the accuracy and comfort during treatment.
- Specification: 1300(L) x 550(W)/mm

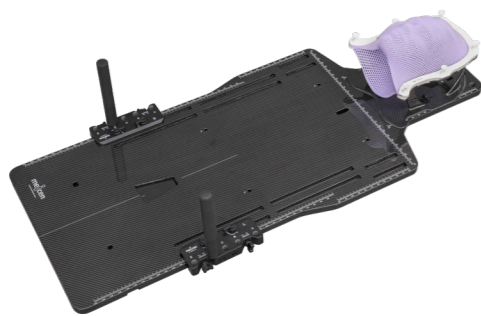


Shoulder Retractor MC-AG001-A01

- Comfort and reduce inactive displacement effectively.
- Compatible with MC-AF001 and MC-AG001 for better patient comfort.



Compatible with



SRS Cradle - page 8 to 11



Vacuum Cushions - page 54 to 56

Meicen A-Series Baseplates

Meicen A-Series Head-Shoulder-Breast Baseplate

MC-AF002 Carbon Fiber

MC-AG002 Glass Fiber MR

- Contoured design for patient comfort.
- Sides emargination for simple installation and carry.
- Provides immobilization solution for head, neck, shoulders and breast.
- Specification: 1000(L) x 550(W)/mm



Meicen A-Series Pelvic Baseplate

MC-AF003 Carbon Fiber

MC-AG003 Glass Fiber MR

- Contoured design for patients comfort.
- Sides emargination for simple installation and carry.
- Provides immobilization solution for thorax, abdomen and pelvic.
- Specification: 850(L) x 520(W)/mm

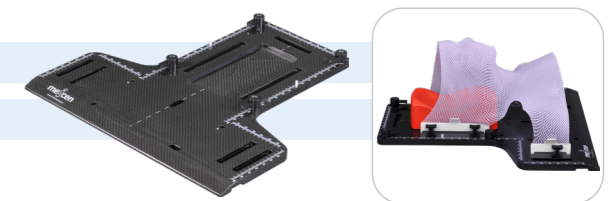


Meicen A-Series Head-Shoulder Baseplate

MC-AF004 Carbon Fiber

MC-AG004 Glass Fiber MR

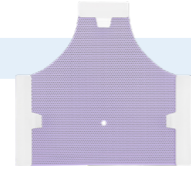
- Provides immobilization solution for head, neck and shoulders.
- Compatible with all U-frame Masks and L-type Masks.
- Compatible with Color Headrest RE-HSP5.
- Specification: 550(L) x 550(W)/mm



Meicen A-Series Baseplates - Optional Components

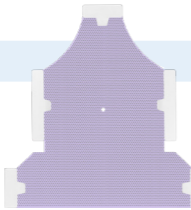
Triangular Head Mask (Page 40)

- M2422-VLA191W 22% perforation, 2.4mm
- M24RA-VLA580W Reinforced, 2.4mm



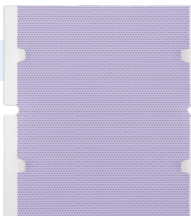
Head-Neck-Shoulder Mask (Page 41)

- M2422-VLB191W 22% perforation, 2.4mm
- M24RA-VLB580W Reinforced, 2.4mm



Chest-Pelvic Mask (Page 41)

- M3038-VLK481W 38% perforation, 3.0mm



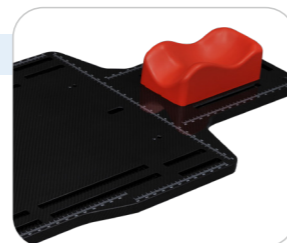
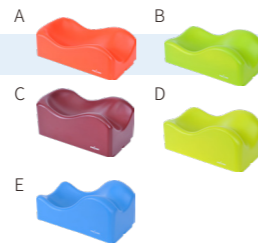
Vacuum Cushion (Page 54-56)

- 120x80cm, with Indexing Bars, RC-E5025S
- 100x75cm, RC-E5020
- 70x70cm, RC-E4013



Color Headrest RE-HSP5

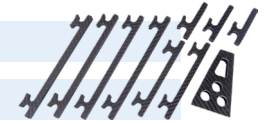
- Effectively improve patient comfort and reduce involuntary displacement.
- 5 Sizes, A to E.
- Can be compatible with A-Series Baseplates.



Meicen A-Series Baseplates - Optional Components

Block Set (standard)

- MC-AF001-A02 Carbon Fiber
- MC-AG001-A03 MR



Hand Grips (standard)

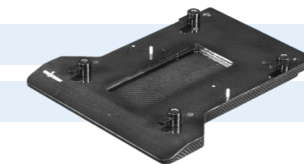
- RC-HGF01 Carbon Fiber
- RM-HGG01 MR



Meicen B-Series Baseplates

Meicen B-Series U-Frame Head Baseplate

- MC-BF003 Carbon Fiber
- MC-BG003 Glass Fiber MR



- Provides the head support.
- Compatible with all U-frame Masks.
- Compatible with Meicen all type headrests.
- Specification: 366(L) x 420(W)/mm

Meicen B-Series Tilting U-Frame Head Baseplate

- MC-BF004 Carbon Fiber
- MC-BG004 Glass Fiber MR



- Provides the head support.
- Compatible with all U-frame Masks.
- Tilting angles: 5°/10°/20°/25°/30°/35°/40°/45°.
- Compatible with Meicen all type headrests.
- Specification: 377(L) x 306(W)/mm