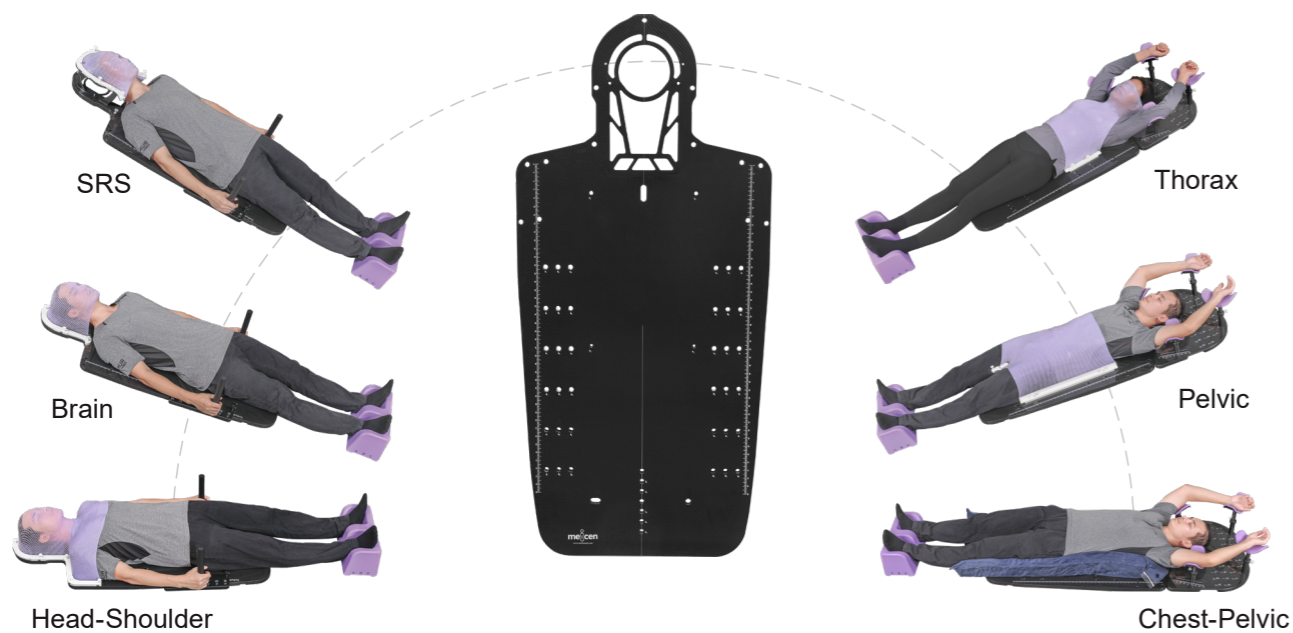


Meicen C-Series Baseplates

The Meicen C-Series Baseplates have a Pin-lock design for easy operation, provides the highest degree of stability for head, head-shoulders, thorax, pelvic and full-body support. Dual-configured for adult and pediatric treatments. The C-Series Baseplates are lightweight, and adjustable shoulder retractor with shoulder suppression. It is compatible with all S-type Masks and Meicen Pin-lock type Masks.

- Contoured design for patients comfort
- Sides emargination for simple installation and carry
- Configured for multiple treatments
- Different location choices to provide better immobilization for each patient



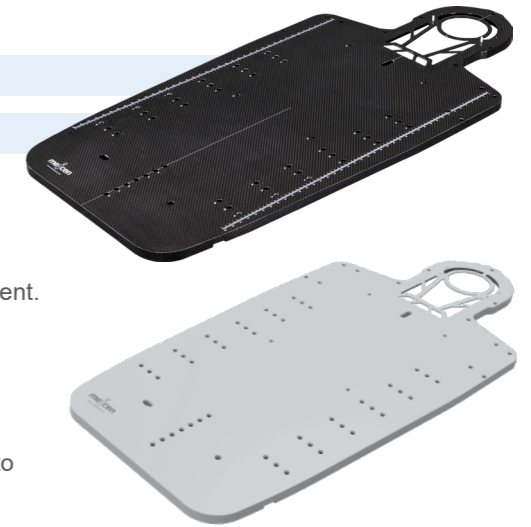
C-Series AIO Baseplate Solutions

Meicen C-Series Baseplates

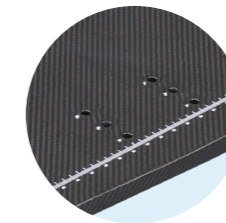
Meicen C-Series AIO Baseplate

MC-CF001	Carbon Fiber
MC-CG001	Glass Fiber MR

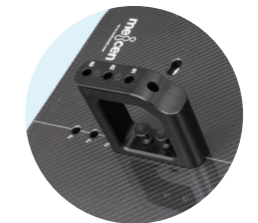
- Provide multiple treatment options for head, head-shoulders, thorax, pelvic and full-body support.
- Different location choices to provide better immobilization for each patient.
- The Leg Separator can be locked and removed easily, and adjusted to fit each patient.
- It can be adapted to the standard and narrow shoulder S-type Masks.
- Optional Overhead Arm Support and Shoulder Retractor can be used to improve the accuracy and comfort during treatment.
- Specification: 1300(L) x 606(W)/mm



Easily adjustable Hand Grips



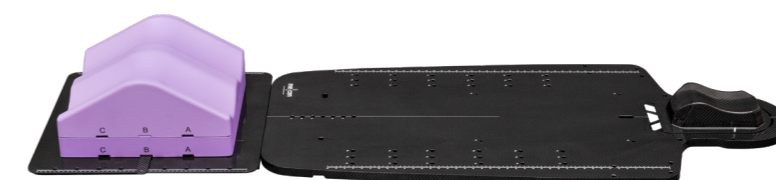
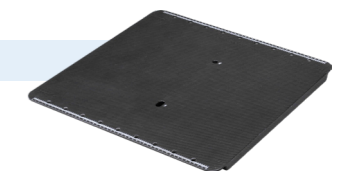
Adjustable to patient size



Leg Separator (optional)

Extension Board RC-EBF01

- Light weight, easy to move.
- Offers advanced indexing options.
- MR compatible: RM-EBG01



Meicen C-Series Baseplates

Meicen C-Series Head-Shoulder-Breast Baseplate

MC-CF002 Carbon Fiber

MC-CG002 Glass Fiber MR

- The contoured design for patients comfort.
- Sides emargination for simple installation and carry.
- Provide the highest degree of stability for head, head-shoulders and breast.
- It can be adapted to the standard and narrow shoulder S-type Masks.
- Comfortable and adjustable Hand Grips assist with shoulder retraction.
- Specification: 1000(L) x 606(W)/mm

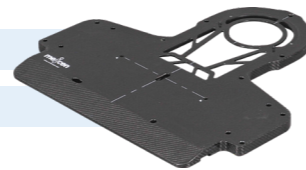


Meicen C-Series Head-Shoulder Baseplate

MC-CF004 Carbon Fiber

MC-CG004 Glass Fiber MR

- Specific design for Elekta HexaPOD™ evo RT System.
- Dual-configured for standard and narrow shoulder S-type Masks.
- Specification: 550(L) x 550(W)/mm



Meicen C-Series Pelvic Baseplate

MC-CF003 Carbon Fiber

MC-CG003 Glass Fiber MR

- The contoured design for patients comfort.
- Sides emargination for simple installation and carry.
- Different location choices to provide better immobilization for each patient.
- Specification: 850(L) x 575(W)/mm



Meicen C-Series Baseplates - Optional Components

Shoulder Retractor can effectively improve patient comfort and reduce inactive displacement, comfortable and adjustable Hand Grips assist with shoulder retraction.

Pin-Lock Shoulder Retractor MC-CG001-A01

Compatible with MC-CF001 and MC-CG001



Pin-Lock Shoulder Retractor MC-CG002-A02

Compatible with MC-CF002 and MC-CG002



Can be locked and removed easily, and adjusted to fit each patient.

Leg Separator MC-CG001-A04

Compatible with MC-CF001 and MC-CG001



Groin Lock MC-CG001-A03

Compatible with MC-CF001, MC-CG001, MC-CF003 and MC-CG003



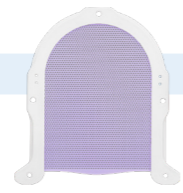
SRS Cradle - page 8 to 9

SRS Masks - page 10 to 11

Meicen C-Series Baseplates - Optional Components

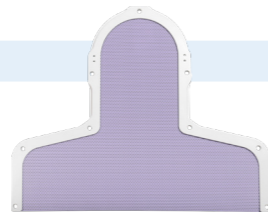
S-Shaped Head Mask (Page 36&38)

- M2422-VSA190W 22% perforation, 2.4mm
- M3038-VSA480W 38% perforation, 3.0mm
- M24RA-VSA580W Reinforced, 2.4mm
- M30RA-VSA610W Reinforced, 3.0mm



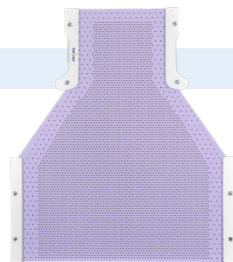
S-Shaped Head-Neck-Shoulder Mask (Page 37&39)

- M2422-VSB190W 22% perforation, 2.4mm
- M3038-VSB480W 38% perforation, 3.0mm
- M24RA-VSB580W Reinforced, 2.4mm
- M30RA-VSB610W Reinforced, 3.0mm
- M2422-VSB191W 22% perforation, 2.4mm, narrow shoulder



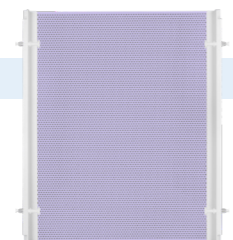
Pin-lock type Neck-Thorax Mask (Page 46)

- M24RA-VSF580W Reinforced, 2.4mm
- M30RA-VSF610W Reinforced, 3.0mm



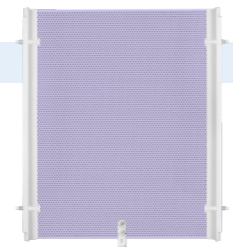
Pin-lock type Trunk Mask (Chest-Pelvic) (Page 46)

- M2422-VST190W 22% perforation, 2.4mm
- M3038-VST480W 38% perforation, 3.0mm



Pin-lock type Trunk Mask (Pelvic) (Page 46)

- M2422-VST191W 22% perforation, 2.4mm
- M3038-VST481W 38% perforation, 3.0mm



Meicen C-Series Baseplates - Optional Components

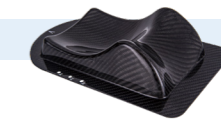
Vacuum Cushion (Page 54-56)

- 100x70cm, with Indexing Bars, RC-E5005S
- 150x75cm, with Indexing Bars, RC-E5033S
- 100x70cm, RC-E5003
- 150x75cm, RC-E5032



S-Type Headrests (Page 58)

- RE-HSF6 Carbon Fiber Headrest, 6 Sizes, A to F
- RE-HSB5 Color Headrest, 5 Sizes, A to E
- RE-HSC6 Clear Headrest, 6 Sizes, A to F



RE-HSF6



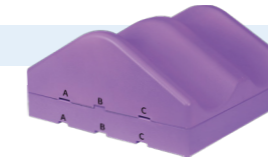
RE-HSB5



RE-HSC6

Knee & Feet Cushion

- Improve the comfort of the patient when positioning.
- Can be fixed directly to the CT or treatment couchtop, or with the Meicen Extension Board.



Knee Cushion RE-FCA01

Elevation Cushion RE-FCA02



Feet Cushion RE-FCA03

Overhead Arm Support RC-ASF01

- It can be used together with the Meicen C-Series Baseplate MC-CF001 and MC-CF002 to improve reproducible precision and comfort in thorax and lung tumor treatment.
- The height of Wrist Supports can be adjusted to each patient.
- The angle of Arms Supports can be adjusted to each patient.
- MR compatible: RM-ASG01

